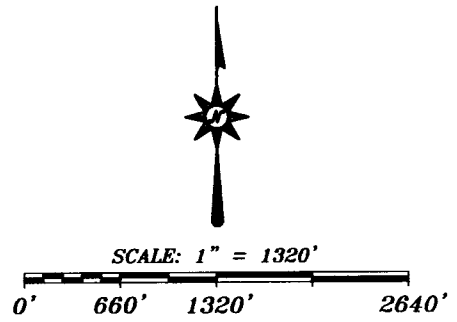
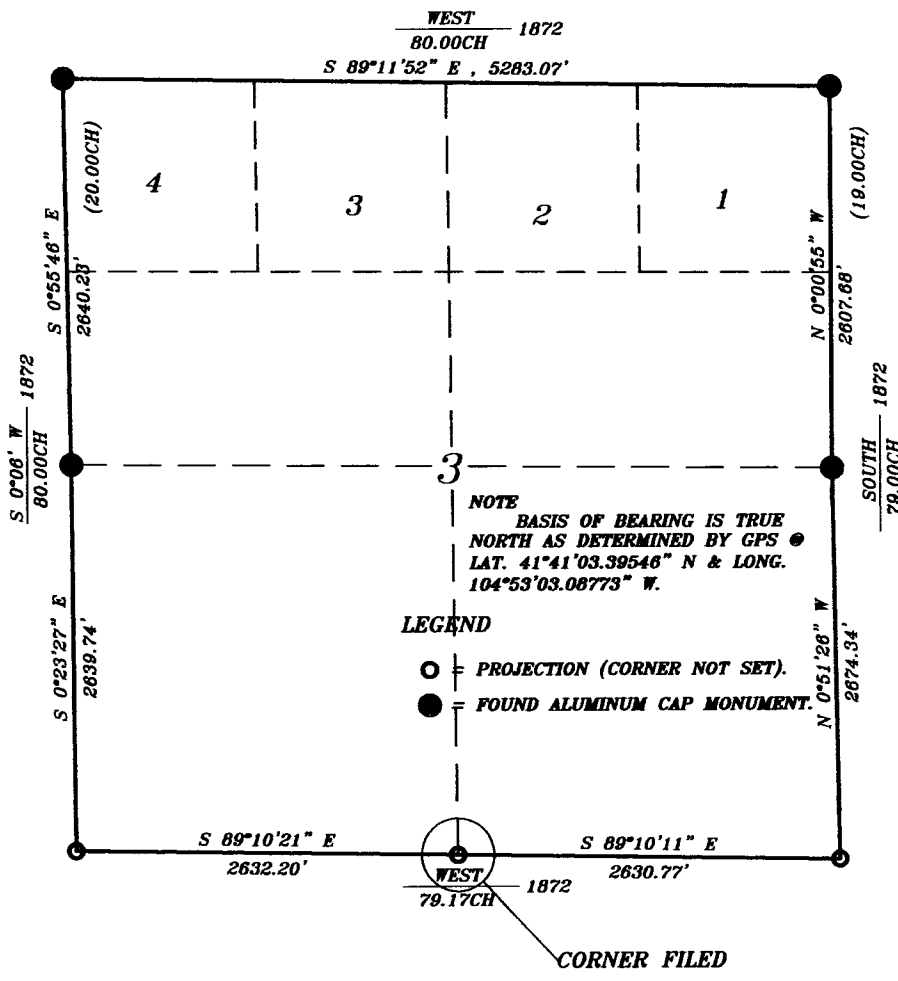


# State of Wyoming Corner Record

(In compliance with the CORNER PERPETUATION AND FILING ACT, Wyoming Statutes, 1977, Section 36-11-101, et. seq., and the Rules and Regulations of the Board of Registration for Professional Engineers and Professional Land Surveyors.)

Record of original survey and citation of source of historical information (if corner is lost or obliterated). Description of corner monumentation evidence found and/or monument and accessories established to perpetuate the location of this corner. Sketch of relative location of monument, accessories and reference points with course and distance to adjacent corner(s) (if determined in this survey). Method and rationale for reestablishment of lost or obliterated corner.



**NOTE**  
BASIS OF BEARING IS TRUE  
NORTH AS DETERMINED BY GPS ●  
LAT. 41°41'03.39546" N & LONG.  
104°53'03.08773" W.

**LEGEND**  
○ = PROJECTION (CORNER NOT SET).  
● = FOUND ALUMINUM CAP MONUMENT.

**FOUND:**  
PK NAIL IN CENTER OF ROAD.

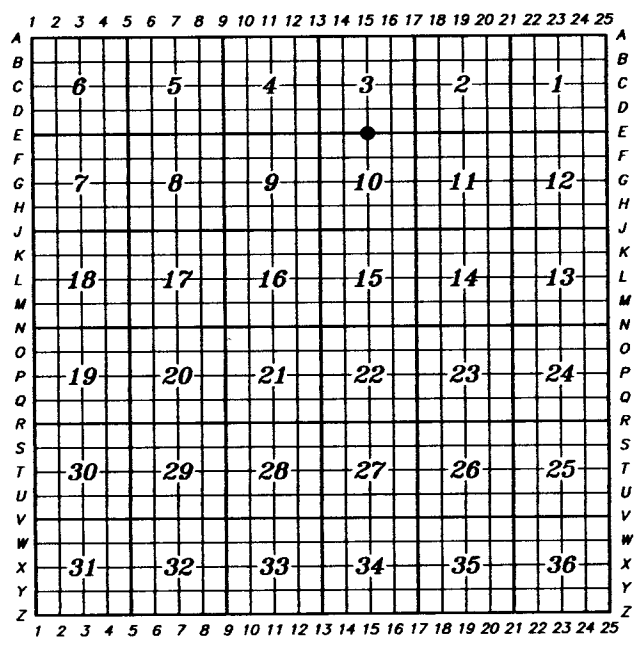
**SET:**  
NOTHING.

**GLO:**  
SET A QUARTZ STONE  
18"x8"x8" FOR 1/4 SECTION  
CORNER.

Date of Field Work: MONTH OF AUGUST OF 2010

Office Reference: Job No. 46-10

### CROSS INDEX DIAGRAM T 19 N , R 67 W



Firm/Agency, Address  
Siek Surveying Service  
P.O. Box 1765  
Casper, Wyoming, 82602  
(307)266-6829

This corner record was prepared by me or under my direction and supervision.

SEAL & SIGNATURE



( LARAMIE COUNTY )

Corner Name: S/4 Section 3, T 19 N, R 67 W, 6th P.M. Cross-Index No. E-15  
SBRPEPLS/PLSW:March 1994